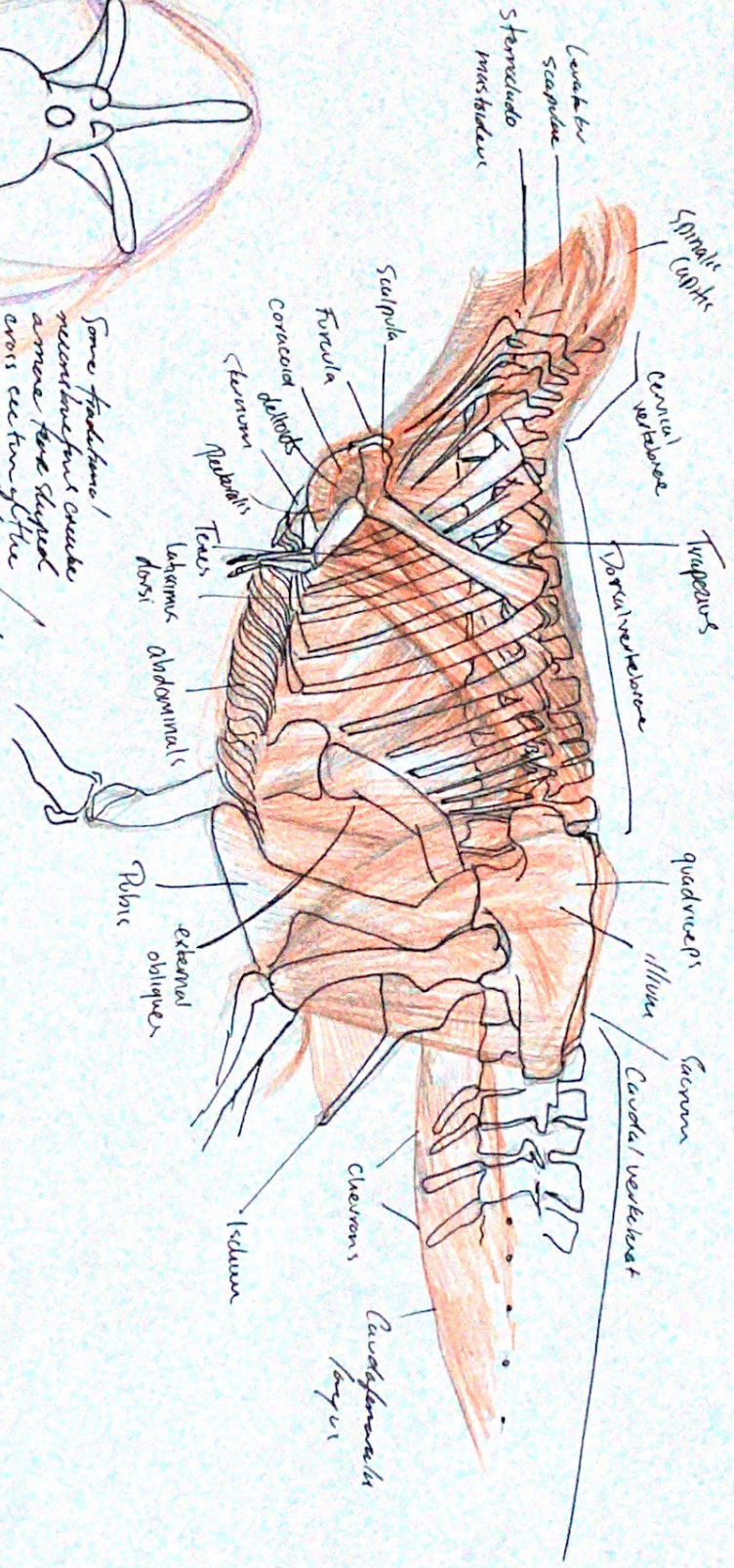
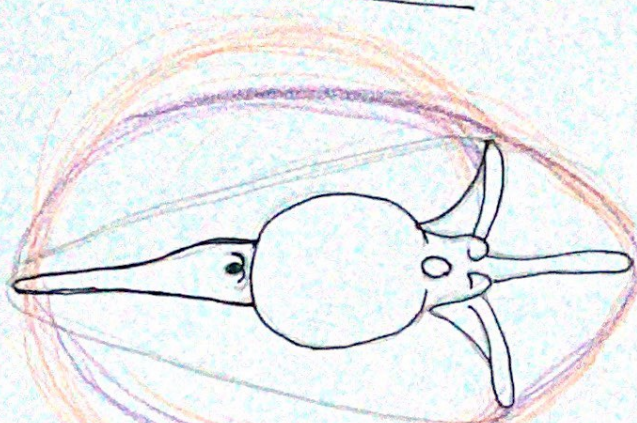


Lower Neck and abdominal region

Hutchinson's T-Bar diagrams and Woodcock's report
 Primarily transverse



Some fractions!
 metacarpals create
 a more fine skeletal
 cross section of the
 tail, a single falling into
 account the ~~the~~ caudal laminae.
 The sides of each T is set
 at the lateral extent of the
 transverse processes.
 Orange outline maybe more reflective
 of outline, from a cross in diameter of
 black line
 Purple is 1st curve exerts to transverse processes

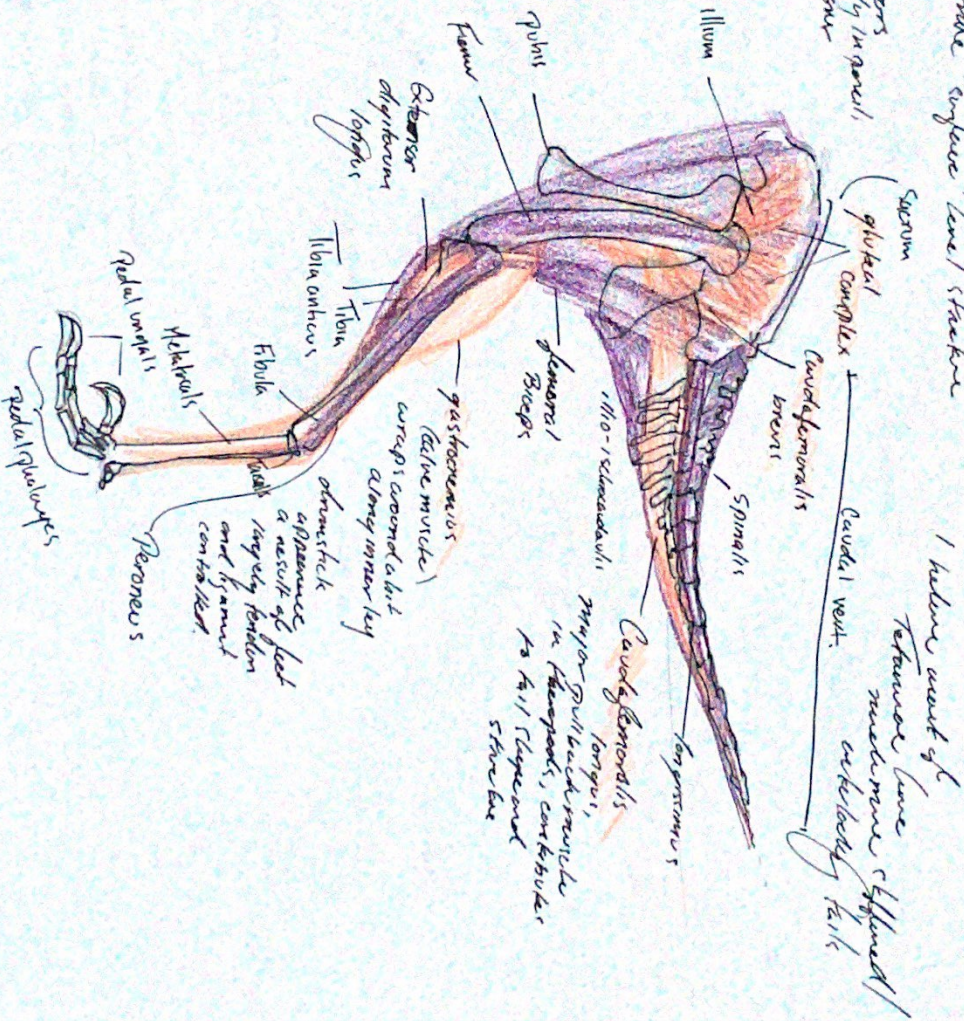
Hand / limb structures and some of fur!

A trochanter, tubercle, but it's a fairly general transport Pellets.

Orange skeletal represent deeper muscles.
Purple represent more "surface" level structure
Then out - all bone.

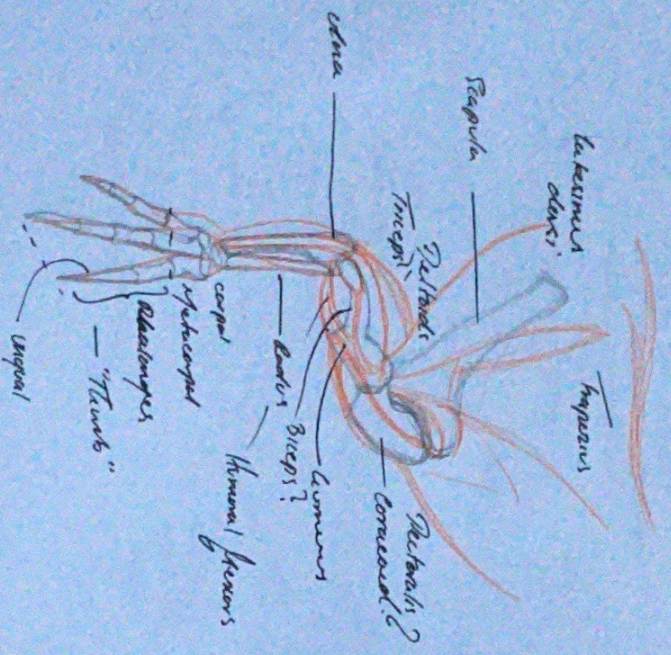
may be some errors
as it was initially in pencil,
and only printed one
one / saw the
problem of gray.

likely
Some of
these muscles
were hollow
depending on
their use and
specific organism.
Play also be smaller
as to represent
muscles clearer.



Drawing Theropod Arms,
 esp. Hand Shape
Based on Stokes/Orwell

→ front



Notably unlike
 avian or mammalian
 hands -
 no large
 distal
 phalanges.



Relatively
 long manus,
 strong,
 esp. in theropods.

The hand based on
Stokes's nerve form.

